

WAKAEI MARU 8

CRANE BARGE



PRINCIPAL PARTICULARS

REGISTRY	: SINGAPORE
NOTATION	: AMERICAN BUREAU OF SHIPPING (ABS)
GRT / NRT	: 681 / 204
LENGTH OA	: 45.00m
BEAM MLD	: 16.00m
DEPTH MLD	: 2.70m
OPERATING DRAFT	: 1.20m - 1.70m

CRANE DESCRIPTION

CRANE MODEL	: SKK 1005 GDTA
CRANE TYPE	: PEDESTAL LATTICED BOOM
MAKER	: SKK, JAPAN
MAIN BOOM LENGTH	: 28.00m
JIB EXTENSION	: 2.80m

MAIN HOIST

CAPACITY	: 80 Tonne (28.00m BOOM)
	: 100 Tonne (22.00m BOOM)
WORKING RADIUS	: 27.30m / 8.30m (28.00m BOOM)

AUXILIARY HOIST

CAPACITY	: 31 Tonne
WORKING RADIUS	: 29.90m / 9.10m

DECK DESCRIPTION

DECK SPACE	: 22.00m x 14.00m
DECK CAPACITY	: 200 Tonne
DECK STRENGTH	: 7.5 Tonne / m ²

GENERATORS

	: 1 x 90KVA, 220 / 100V, 60Hz, 3ph
	: 1 x 75KVA, 220 / 100V, 60Hz, 3ph
	: 1 x 125KVA, 220 / 100V, 60Hz, 3ph
	: 1 x 150KVA, 220 / 100V, 60Hz, 3ph

COMMUNICATIONS

	: MARINE VHF WALKIE TALKIES
--	-----------------------------

TANK CAPACITIES

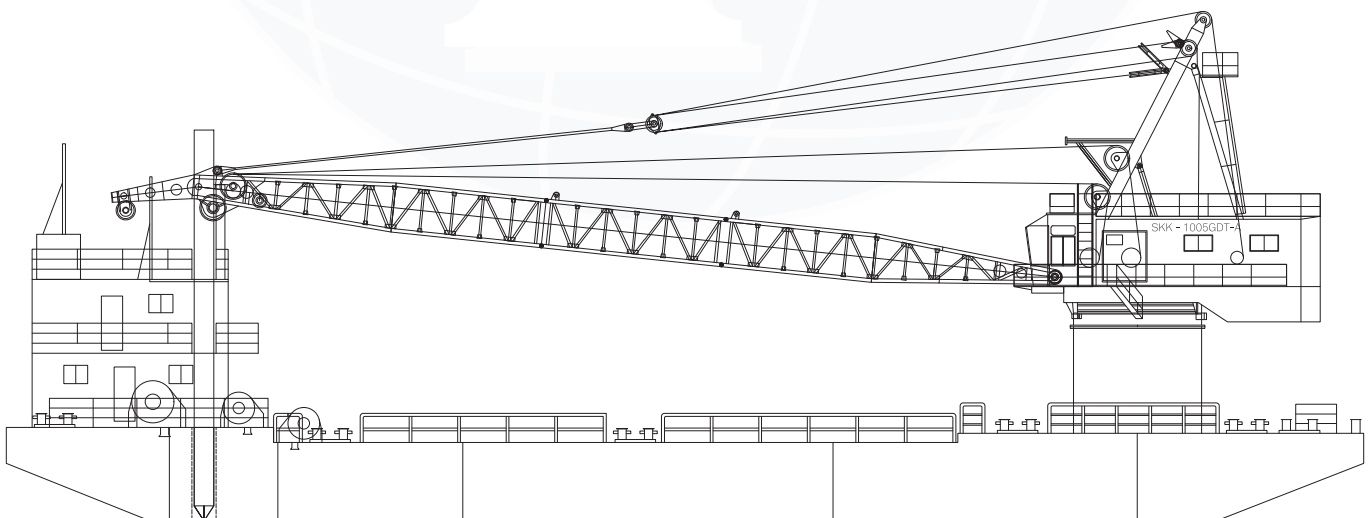
WATER BALLAST	: 2 x 59.55m ³
FRESH WATER	: 2 x 42.2m ³
FUEL TANK	: 2 x 19.63m ³

ACCOMMODATION

	: 6 x 1 MAN CABIN
	: 1 x 4 MEN CABIN

MOORING (4 POINT)

ANCHOR	: 2.25 Tonne Anchor
ANCHOR WIRE	: 26mm Diameter x 30m (Max. 600m)
SPUD	: 2 x 18.00m x 560mm Diameter SPUD



WAKAEI MARU 8

CRANE BARGE



LOAD CAPACITY

BOOM ANGLE	(°)	30°	40°	50°	60°	70°	76°	78°
MAIN BLOCK SWL	(Tonne)	23.9	34.3	41.3	54.0	75.5	-	80.0
MAIN BLOCK PL [1.1x]	(Tonne)	26.2	37.7	45.4	59.4	83.1	-	88.0
MAIN BLOCK RADIUS FROM CENTRE	(m)	27.3	22.9	19.6	15.87	11.9	-	8.3
AUXILIARY BLOCK SWL	(Tonne)	10.0						
AUXILIARY BLOCK RADIUS FROM CENTRE	(m)	30.1	25.7	22.4	18.7	14.7	11.1	-

