  
**FRANKLIN OFFSHORE**

# MARINE FLEET

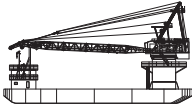
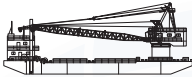

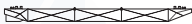
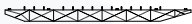




2018 . II





# CONTENT PAGE



Introduction		3
<b>Isamigo 3</b> <i>Crane Barge</i>		4
<b>Wakaei Maru 8</b> <i>Crane Barge</i>		6
<b>Tekkai</b> <i>Accommodation Work Barge</i>		8
<b>Franklin 10</b> <i>Deck Cargo Barge</i>		9
<b>Franklin 11</b> <i>Deck Cargo Barge</i>		10
<b>Franklin 2501</b> <i>Deck Cargo Barge</i>		11
<b>Franklin 3302</b> <i>Deck Cargo Barge</i>		12
<b>Franklin 2001</b> <i>Test Barge</i>		13
<b>Franklin T2801</b> <i>Test Barge</i>		14

# INTRODUCTION



## Franklin Offshore Holdings Pte. Ltd.

Franklin Offshore Holdings Pte. Ltd. is the parent company of the Franklin Offshore group of companies.

## A World-Class Company

Franklin Offshore, headquartered in Singapore, serves the oil & gas industry in offshore exploration, production and construction activities. Operating from our waterfront facility, our marine fleet supports operations throughout the region.

We own and operate nine vessels:

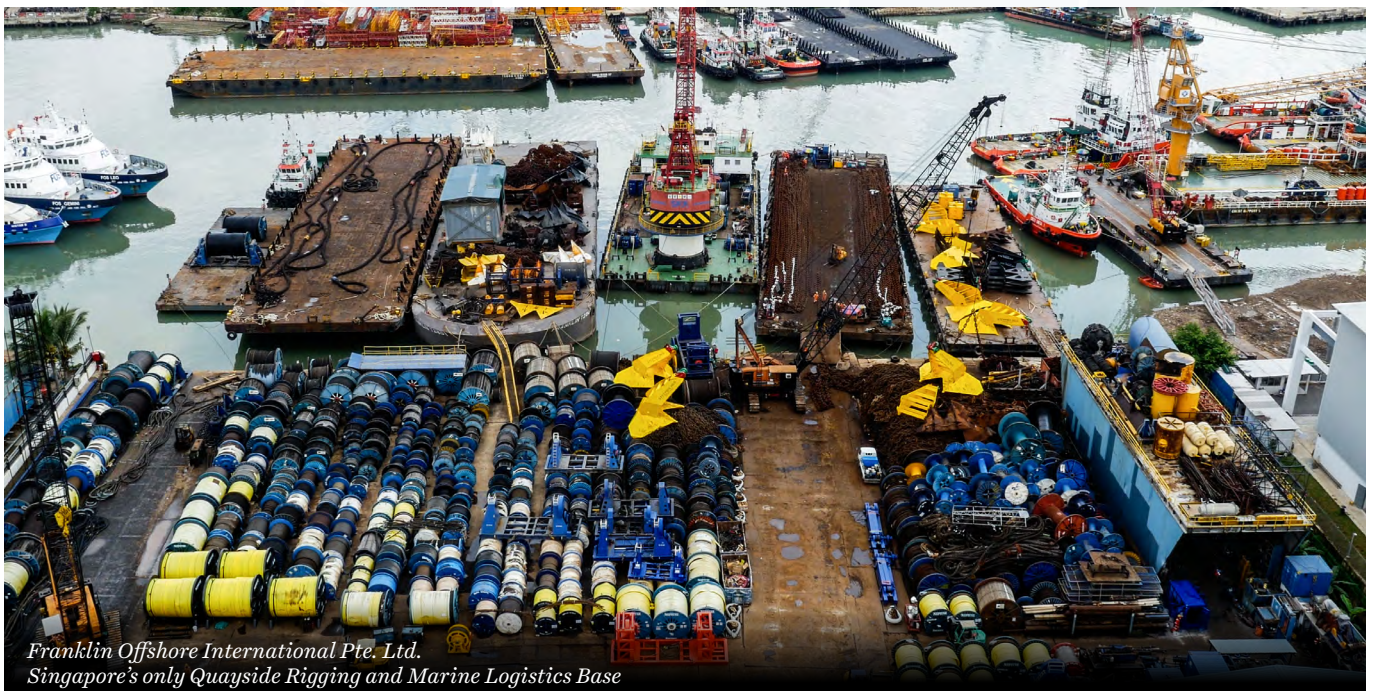
- 2 x Crane Barges
- 1 x Accommodation Work Barge
- 4 x Deck Cargo Barges
- 2 x Test Barges

## Project Support

Our crane barges are used primarily for lifting, removal, and replacement of offshore equipment, marine salvage work, lifting and transporting oilfield equipment, deployment of mooring and riser systems as well as other offshore installation services. Our crane barges are fully-manned and equipped with, among other features, shallow drafts, revolving cranes, a self-sustained mooring system and a broad range of rigging equipment.

## Disclaimer

This document contains general information only. All information is believed to be correct but no warranty is given as to its accuracy and completeness as well as to the availability, adequacy and suitability of any product and/or service. To the fullest extent permissible, Franklin Offshore disclaims all liabilities for any loss, claim or damage arising from any information contained in this brochure.



# ISAMIGO 3

## CRANE BARGE



### PRINCIPAL PARTICULARS

REGISTRY	: SINGAPORE
NOTATION	: BUREAU VERITAS ( BV )
GRT / NRT	: 1270 / 381
LENGTH OA	: 48.04m
BEAM MLD	: 22.00m
DEPTH MLD	: 3.80m
OPERATING DRAFT	: 1.20m - 1.70m

### CRANE DESCRIPTION

CRANE MODEL	: SKK 20011 GDT-N
CRANE TYPE	: REVOLVING CRANE
MAKER	: SKK, JAPAN
MAIN BOOM LENGTH	: 34.00m
JIB EXTENSION	: 3.00m

### MAIN HOIST

CAPACITY	: 200 Tonne ( 34.00m BOOM )
	: 206 Tonne ( 22.00m BOOM )
WORKING RADIUS	: 33.60m / 11.60m ( 34.00m BOOM )

### AUXILIARY HOIST

CAPACITY	: 31 Tonne
WORKING RADIUS	: 31.60m / 11.60m

### DECK DESCRIPTION

DECK SPACE	: 22.00m x 23.00m
DECK CAPACITY	: 800 Tonne
DECK STRENGTH	: 10 Tonne / m <sup>2</sup>

### GENERATORS

	: 3 X 150 KVA, 220 / 110 V, 50 / 60 Hz
	: 1 x 45 KVA, 220 / 110v, 50 / 60 Hz

### COMMUNICATIONS

	: MARINE VHF WALKIE TALKIES
--	-----------------------------

### TANK CAPACITIES

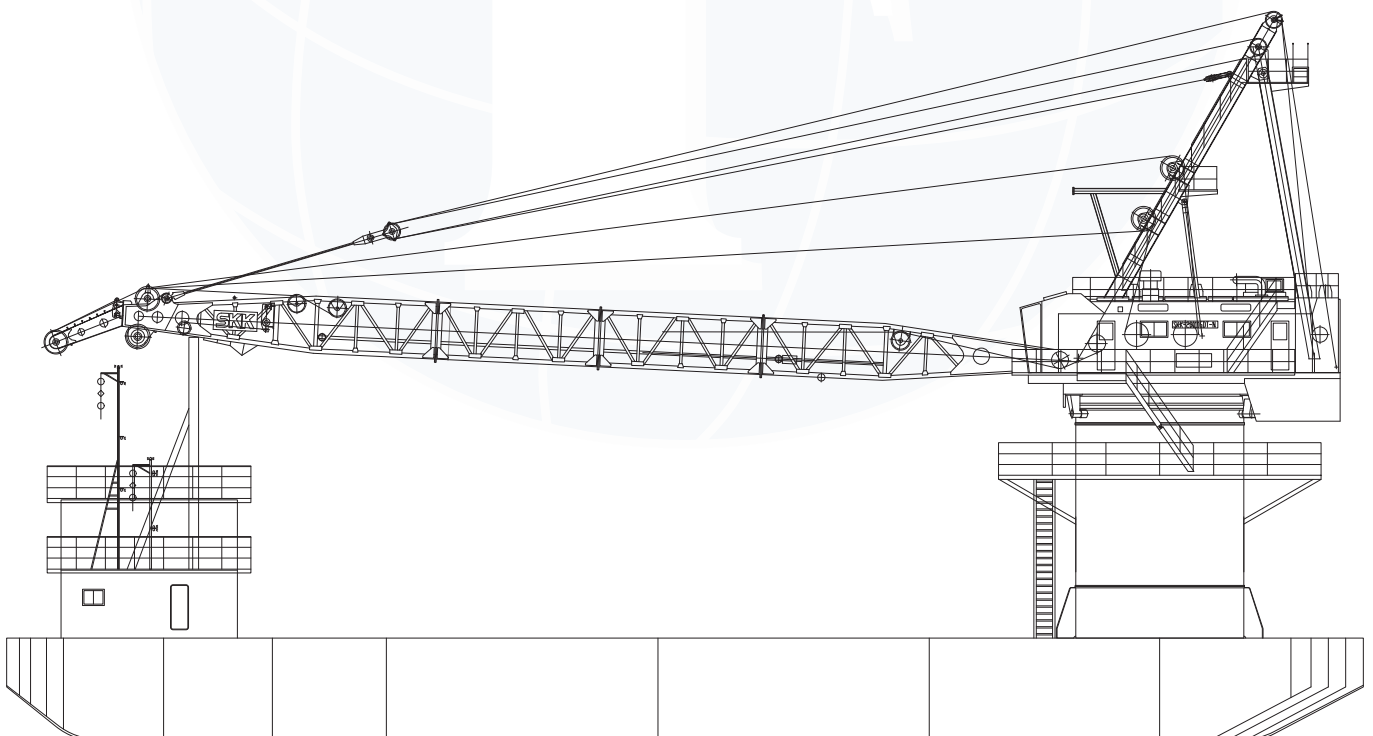
WATER BALLAST	: 269.0m <sup>3</sup> (C), 133.4m <sup>3</sup> (P), 133.4m <sup>3</sup> (S)
FRESH WATER	: 71.3m <sup>3</sup> (P), 71.3m <sup>3</sup> (S)
FUEL TANK	: 74.8m <sup>3</sup>

### ACCOMMODATION

	: 3 x 4 MEN CABINS
--	--------------------

### MOORING ( 4 TO 8 POINT )

ANCHOR	: 3 Tonne Anchor
ANCHOR WIRE	: 32mm Diameter x 600m
MOORING CHAIN	: 40mm Diameter x 500m ( 4 Lengths )



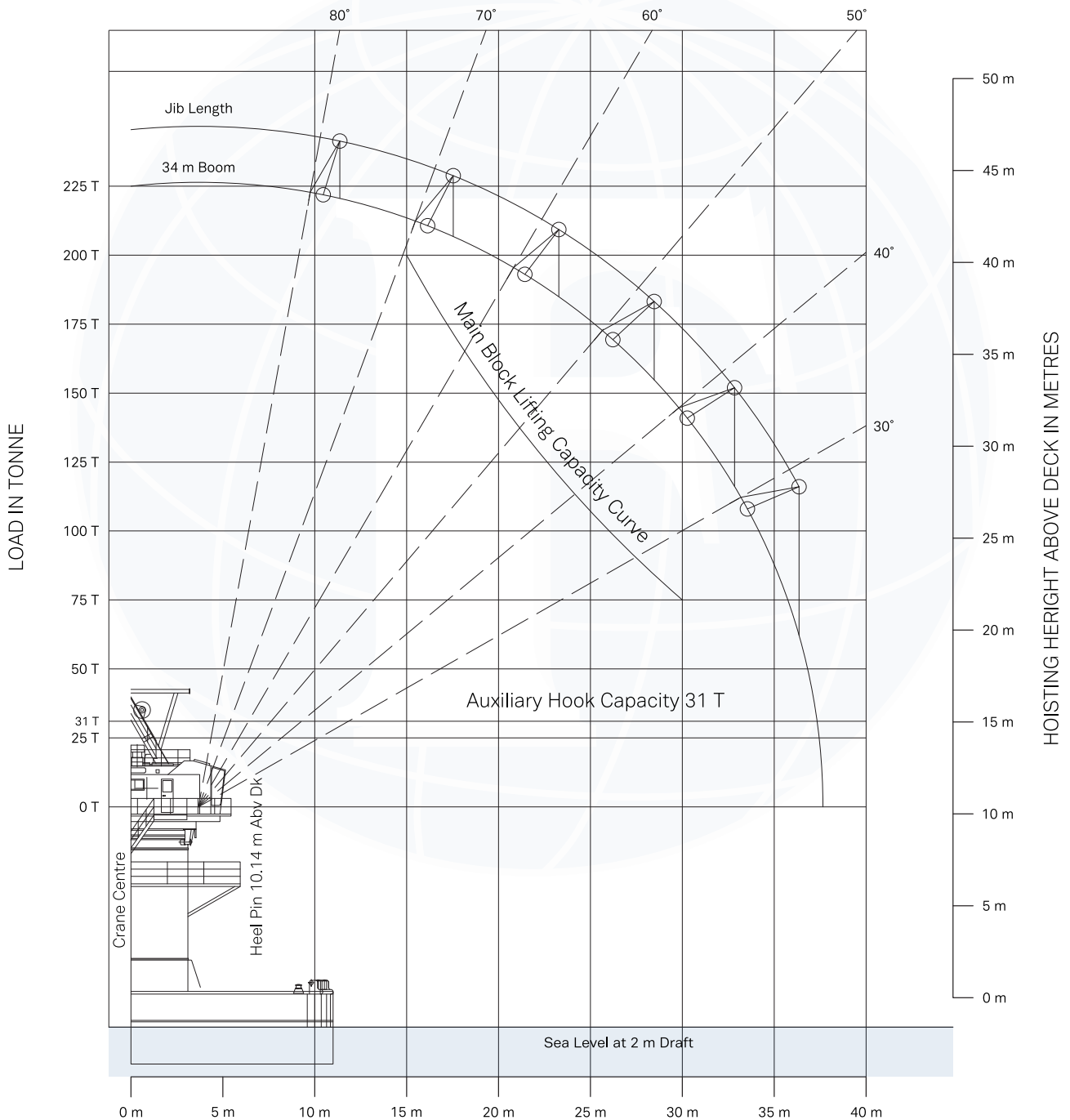
# ISAMIGO 3

## CRANE BARGE



### LOAD CAPACITY

BOOM ANGLE	(°)	30°	35°	40°	45°	50°	55°	60°	65°	70°	71°	75°	80°
MAIN BLOCK SWL	(Tonne)	67.1	74.3	82.5	92.1	103.7	117.8	136.6	160.7	194.5		200.0	
MAIN BLOCK PL [ 1.1x ]	(Tonne)	73.8	81.8	90.8	101.3	114.1	129.6	150.3	176.8	214.0		220.0	
MAIN BLOCK RADIUS FROM CENTRE	(m)	33.5	32.0	30.2	28.3	26.1	23.8	21.3	18.7	16.0	15.7	13.2	10.3
AUXILIARY BLOCK SWL	(Tonne)	31.0											
AUXILIARY BLOCK RADIUS FROM CENTRE	(m)	36.6	35.0	33.1	31.0	28.7	26.2	23.5	20.7	17.7	15.3	14.7	11.6



# WAKAEI MARU 8

## CRANE BARGE



### PRINCIPAL PARTICULARS

REGISTRY	: SINGAPORE
NOTATION	: AMERICAN BUREAU OF SHIPPING ( ABS )
GRT / NRT	: 681 / 204
LENGTH OA	: 45.00m
BEAM MLD	: 16.00m
DEPTH MLD	: 2.70m
OPERATING DRAFT	: 1.20m - 1.70m

### CRANE DESCRIPTION

CRANE MODEL	: SKK 1005 GDTA
CRANE TYPE	: PEDESTAL LATTICED BOOM
MAKER	: SKK, JAPAN
MAIN BOOM LENGTH	: 28.00m
JIB EXTENSION	: 2.80m

### MAIN HOIST

CAPACITY	: 80 Tonne ( 28.00m BOOM )
	: 100 Tonne ( 22.00m BOOM )
WORKING RADIUS	: 27.30m / 8.30m ( 28.00m BOOM )

### AUXILIARY HOIST

CAPACITY	: 31 Tonne
WORKING RADIUS	: 29.90m / 9.10m

### DECK DESCRIPTION

DECK SPACE	: 22.00m x 14.00m
DECK CAPACITY	: 200 Tonne
DECK STRENGTH	: 7.5 Tonne / m <sup>2</sup>

### GENERATORS

	: 1 x 90KVA, 220 / 100V, 60Hz, 3ph
	: 1 x 75KVA, 220 / 100V, 60Hz, 3ph
	: 1 x 125KVA, 220 / 100V, 60Hz, 3ph
	: 1 x 150KVA, 220 / 100V, 60Hz, 3ph

### COMMUNICATIONS

	: MARINE VHF WALKIE TALKIES
--	-----------------------------

### TANK CAPACITIES

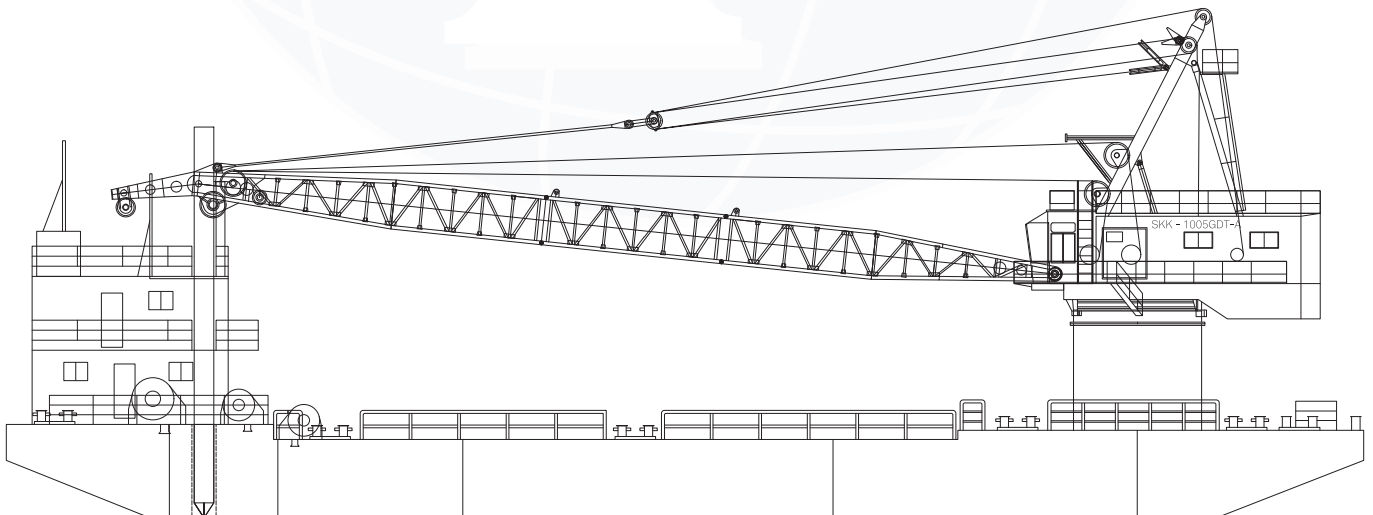
WATER BALLAST	: 2 x 59.55m <sup>3</sup>
FRESH WATER	: 2 x 42.2m <sup>3</sup>
FUEL TANK	: 2 x 19.63m <sup>3</sup>

### ACCOMMODATION

	: 6 x 1 MAN CABIN
	: 1 x 4 MEN CABIN

### MOORING ( 4 POINT )

ANCHOR	: 2.25 Tonne Anchor
ANCHOR WIRE	: 26mm Diameter x 30m ( Max. 600m )
SPUD	: 2 x 18.00m x 560mm Diameter SPUD





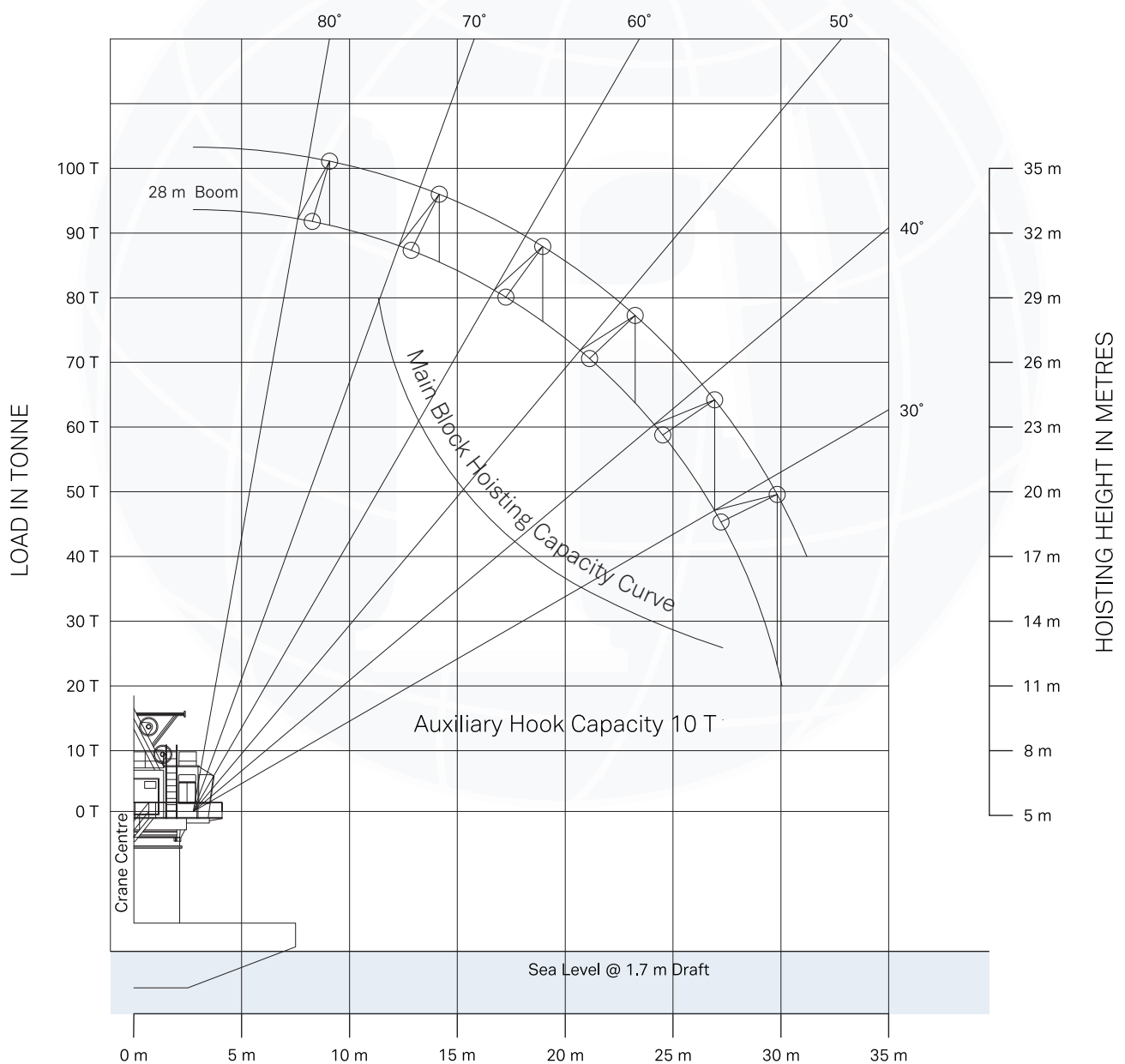
# WAKAEI MARU 8

## CRANE BARGE



### LOAD CAPACITY

BOOM ANGLE	(°)	30°	40°	50°	60°	70°	76°	78°
MAIN BLOCK SWL	(Tonne)	23.9	34.3	41.3	54.0	75.5	-	80.0
MAIN BLOCK PL [ 1.1x ]	(Tonne)	26.2	37.7	45.4	59.4	83.1	-	88.0
MAIN BLOCK RADIUS FROM CENTRE	(m)	27.3	22.9	19.6	15.87	11.9	-	8.3
AUXILIARY BLOCK SWL	(Tonne)	10.0						
AUXILIARY BLOCK RADIUS FROM CENTRE	(m)	30.1	25.7	22.4	18.7	14.7	11.1	-



## ACCOMMODATION WORK BARGE

### PRINCIPAL PARTICULARS

REGISTRY	: PANAMA
NOTATION	: BUREAU VERITAS ( BV )
BUILT	: 1992
GRT / NRT	: 7567 / 2270
LENGTH OA	: 99.84m
BEAM MLD	: 32.00m
DEPTH MLD	: 7.50m
OPERATING DRAFT	: 3.62m

### CARGO CAPACITIES

DEAD WEIGHT	: 11390
CLEAR DECK AREA	: 1245m <sup>2</sup>
FUEL OIL	: 501.81m <sup>3</sup>
FRESH WATER	: 568.46m <sup>3</sup>
PORTABLE WATER	: 1000.00m <sup>3</sup>
BALLAST WATER	: 11241.66m <sup>3</sup>
CHILLER ROOM	: PORTABLE REFRIGERATION FREEZER

### PUMPS

FUEL PUMP	: 2 x 3.0m <sup>3</sup> /h @ 30.0m HEAD
FRESH WATER PUMP	: 2 x 6.9m <sup>3</sup> /h @ 51.5m HEAD
BALLAST PUMP	: 2 x 350m <sup>3</sup> /h @ 22.0m HEAD 3 x 120m <sup>3</sup> /h @ 44.0m HEAD

### GENERATORS

DIESEL GENERATOR	: 2 x 400KVA, 220 / 440V, 60Hz, 3ph
EMERGENCY GENERATOR	: 1 x 400KVA, 220 / 440V, 60Hz, 3ph

### ACCOMMODATION

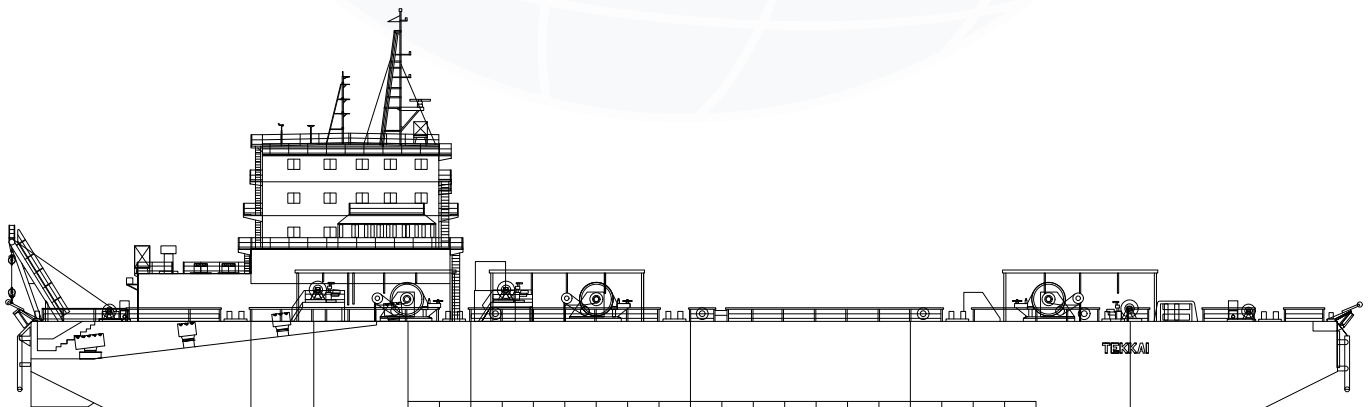
	: 2 x 1 MAN CABIN
	: 16 X 2 MEN CABIN
	: 1 X 8 MEN CABIN

### DECK EQUIPMENT

WINCHES	: 2 x 7.5 Tonne HYDRAULIC WINCH
	: 1 x 10 Tonne ELECTRICAL HYDRAULIC WINCH
CRAWLER CRANE	: ( Optional )

### MOORING ( 8 POINT )

ANCHOR	: 4 x 10 Tonne Anchor
	: 4 x 4 Tonne Anchor
ANCHOR WIRE	: 44mm Diameter x 1000m ( 4 Lengths )
	: 38mm Diameter x 800m ( 4 Lengths )



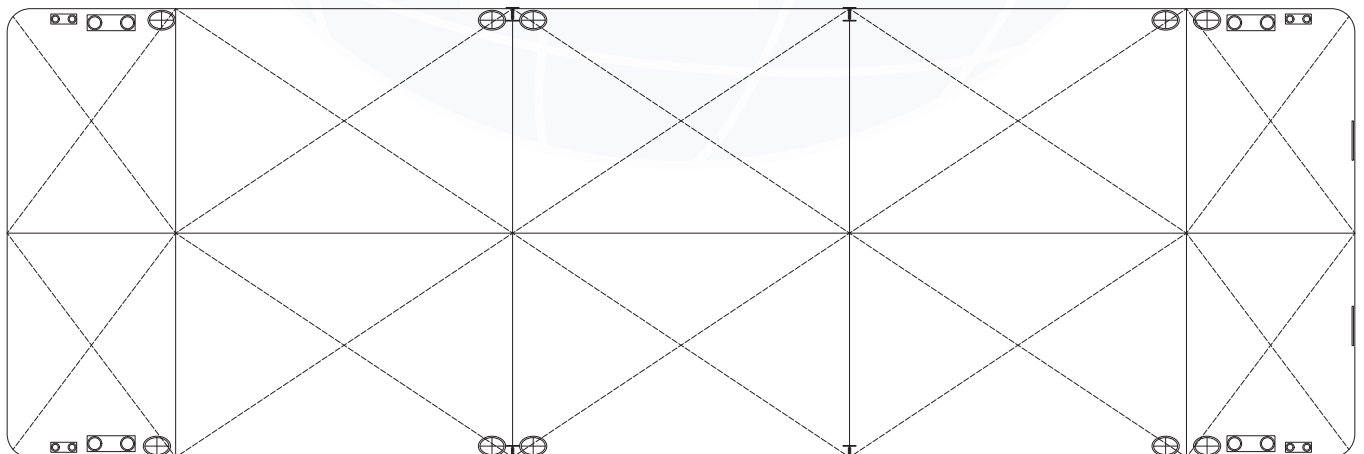
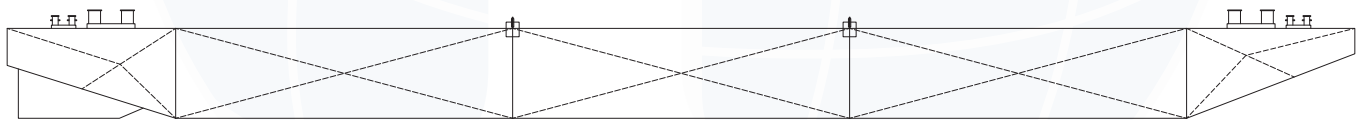


# FRANKLIN 10

## DECK CARGO BARGE



REGISTRY	: SINGAPORE
CLASSIFICATION	: GERMANISCHER LLOYD + 100 A 5 PONTOON
YEAR BUILT	: 2005
OFFICIAL NUMBER	: 391653
LENGTH	: 35.11m
BREADTH	: 12.19m
DEPTH	: 2.44m
GRT / NRT	: 259 / 78
DEAD WEIGHT	: 615 Tonne
DECK PLATE	: 10mm
BULKHEADS	: ONE LONGITUDINAL & FOUR TRANSVERSE
DECK LOADING	: 4 Tonne / m <sup>2</sup>
DECK FITTING	: 1 SET NAVIGATION LIGHT STAND 1 ANCHOR C/W HAND WINCH

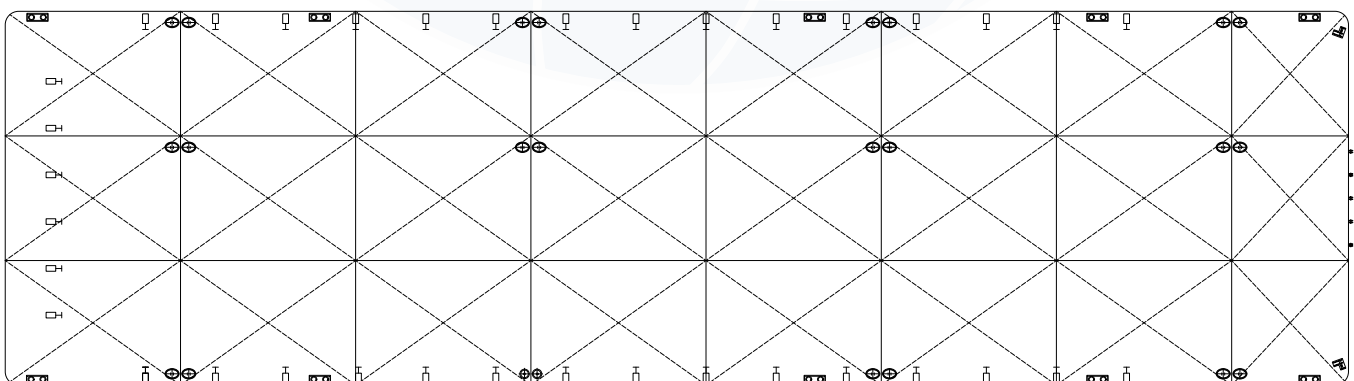
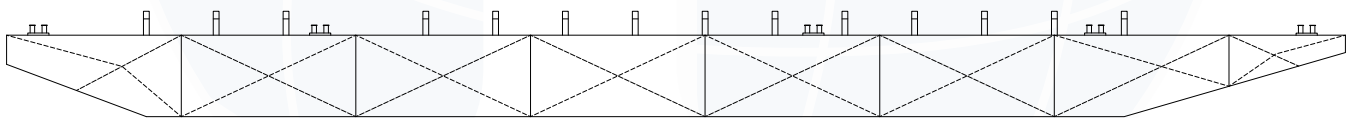


# FRANKLIN 11

## DECK CARGO BARGE



REGISTRY	: SINGAPORE
CLASSIFICATION	: GERMANISCHER LLOYD + 100 A 5 PONTOON
YEAR BUILT	: 2005
OFFICIAL NUMBER	: 391654
LENGTH	: 67.30m
BREADTH	: 19.51m
DEPTH	: 4.27m
GRT / NRT	: 1481 / 445
DEAD WEIGHT	: 3540 Tonne
DECK PLATE	: 12mm
BULKHEADS	: TWO LONGITUDINAL & SEVEN TRANSVERSE
DECK LOADING	: 10 Tonne / m <sup>2</sup>
DECK FITTING	: 1 SET NAVIGATION LIGHT STAND 1 ANCHOR C/W HAND WINCH STANCHIONS FITTED

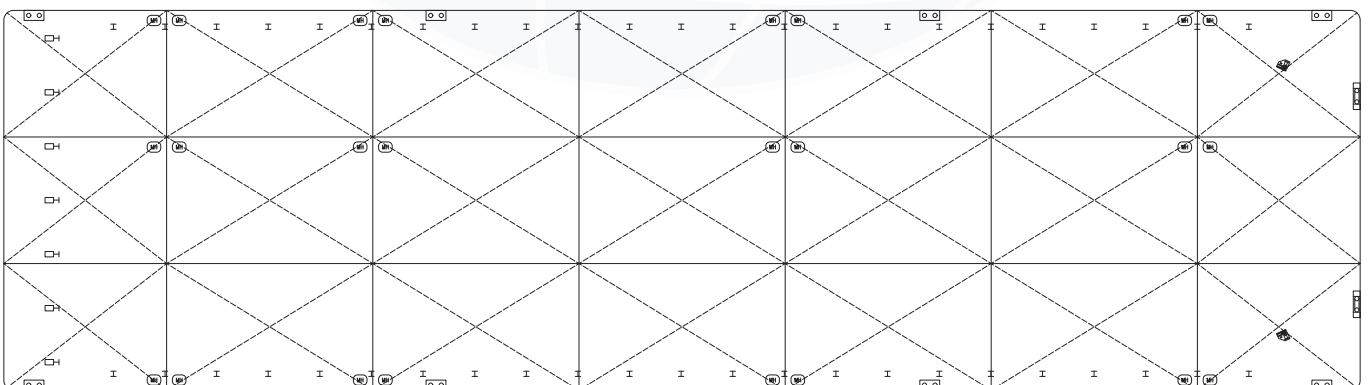
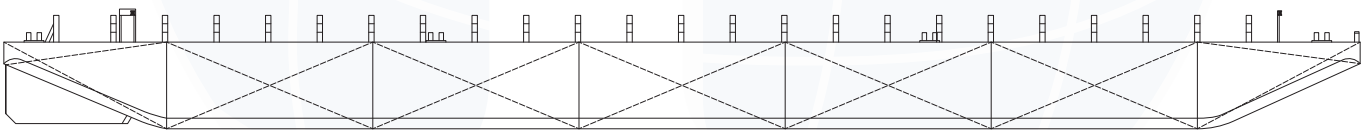


# FRANKLIN 2501

## DECK CARGO BARGE



REGISTRY	: SINGAPORE
CLASSIFICATION	: BUREAU VERITAS ( BV )
YEAR BUILT	: 2006
OFFICIAL NUMBER	: 392282
LENGTH	: 73.15m
BREADTH	: 21.34m
DEPTH	: 4.88m
GRT / NRT	: 1998 / 598
DEAD WEIGHT	: 4871 Tonne
DECK PLATE	: 14mm
BULKHEADS	: TWO LONGITUDINAL & SIX TRANSVERSE
DECK LOADING	: 15 Tonne / m <sup>2</sup>
DECK FITTING	: 1 SET NAVIGATION LIGHT STAND 1 ANCHOR C/W HAND WINCH STANCHIONS FITTED



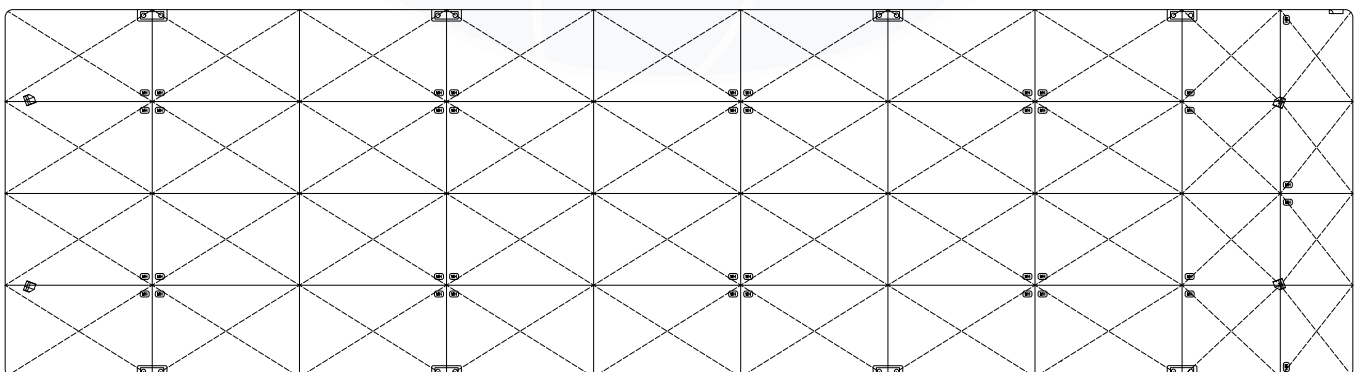
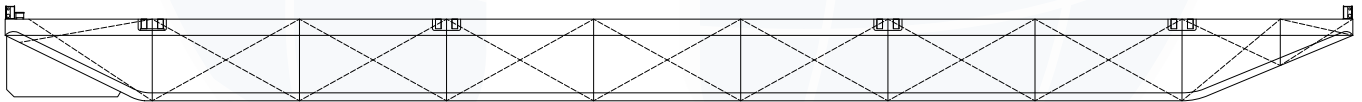


# FRANKLIN 3302

## DECK CARGO BARGE



7.5 PT	: SINGAPORE
CLASSIFICATION	: AMERICAN BUREAU OF SHIPPING ( ABS )
YEAR BUILT	: 2007
OFFICIAL NUMBER	: 393822
LENGTH	: 96.59m
BREADTH	: 27.43m
DEPTH	: 6.10m
GRT / NRT	: 4370 / 1311
DEAD WEIGHT	: 10405 Tonne
DECK PLATE	: 18mm
BULKHEADS	: THREE LONGITUDINAL & NINE TRANSVERSE
DECK LOADING	: 15 Tonne / m <sup>2</sup>
DECK FITTING	: 1 SET NAVIGATION LIGHT STAND 1 ANCHOR C/W HAND WINCH

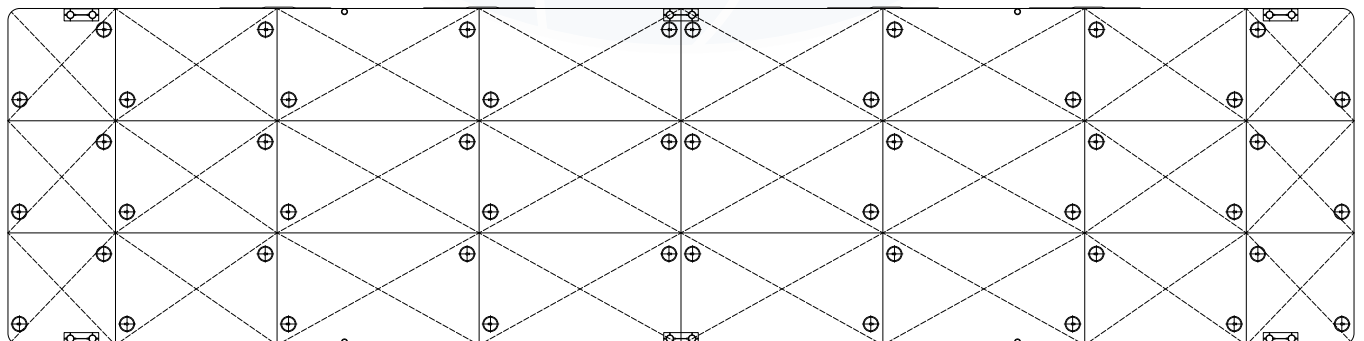
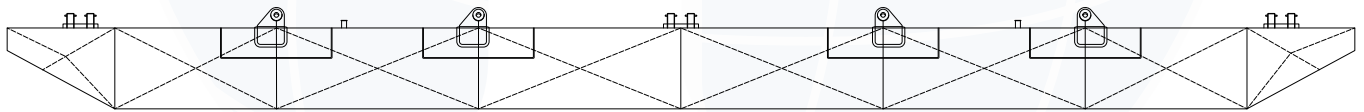


# FRANKLIN 2001

## TEST BARGE



REGISTRY	: SINGAPORE
CLASSIFICATION	: AMERICAN BUREAU OF SHIPPING ( ABS )
YEAR BUILT	: 2008
OFFICIAL NUMBER	: 394539
LENGTH	: 60.00m
BREADTH	: 15.00m
DEPTH	: 3.60m
GRT / NRT	: 823 / 247
DEAD WEIGHT	: 1745 Tonne
TEST WEIGHT	: 2500 Tonne
DECK PLATE	: 15mm
BULKHEADS	: TWO LONGITUDINAL & SEVEN TRANSVERSE
DECK LOADING	: 15 Tonne / m <sup>2</sup>
DECK FITTING	: 1 SET NAVIGATION LIGHT STAND 1 ANCHOR C/W HAND WINCH

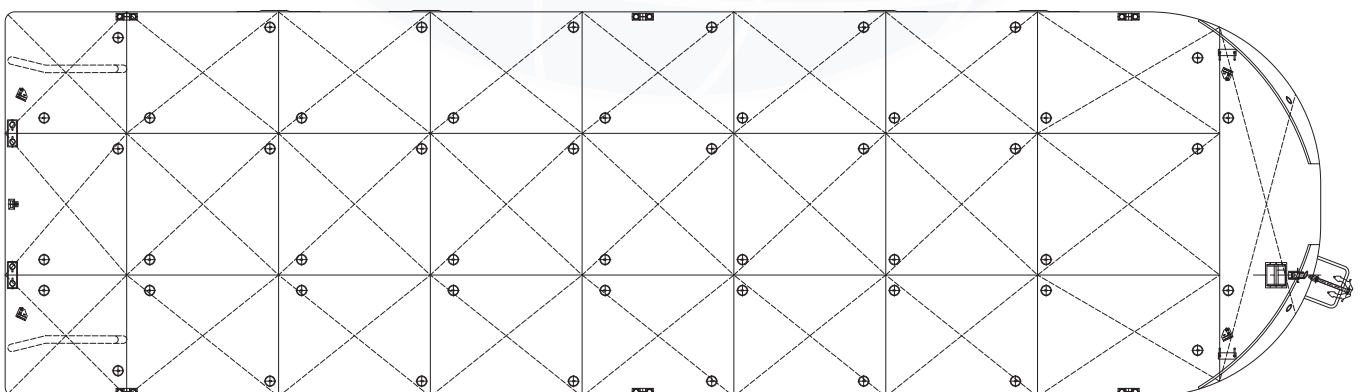
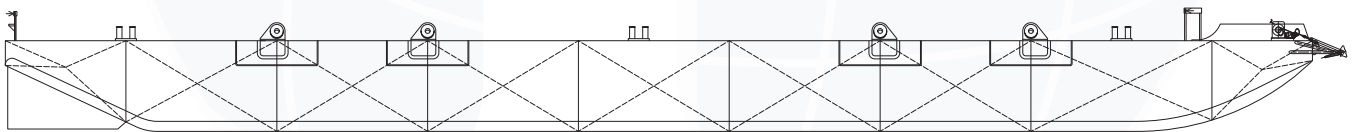


# FRANKLIN T2801

## TEST BARGE



REGISTRY	: SINGAPORE
CLASSIFICATION	: AMERICAN BUREAU OF SHIPPING ( ABS )
YEAR BUILT	: 2009
OFFICIAL NUMBER	: 395946
LENGTH	: 76.13m
BREADTH	: 23.18m
DEPTH	: 5.50m
GRT / NRT	: 2565 / 769
DEAD WEIGHT	: 6339 Tonne
TEST WEIGHT	: 6600 Tonne
DECK PLATE	: 12mm
BULKHEADS	: TWO LONGITUDINAL & EIGHT TRANSVERSE
DECK LOADING	: 15 Tonne / m <sup>2</sup>
DECK FITTING	: 1 SET NAVIGATION LIGHT STAND 1 ANCHOR C/W HAND WINCH











# FRANKLIN OFFSHORE

Your Global Partner for Integrated Rigging and Mooring Solutions

## **Franklin Offshore Holdings Pte. Ltd. (Corporate Headquarters)**

11 Pandan Road  
Singapore 609259  
Tel : +65 6264 3451  
Fax : +65 6264 1130  
Email : general@franklin.com.sg

## **Franklin Offshore International Pte. Ltd.**

11 Pandan Road  
Singapore 609259  
Tel : +65 6264 3451  
Fax : +65 6264 1130  
Email : general@franklin.com.sg

## **Marine and Logistics Support Base**

10 Pioneer Sector 1  
Singapore 628444  
Tel : +65 6863 1110  
Fax : +65 6863 4881  
Email : general@franklin.com.sg

## **Franklin Offshore Mooring Pte. Ltd.**

11 Pandan Road  
Singapore 609259  
Tel : +65 6264 3451  
Fax : +65 6264 1130  
Email : general@franklin.com.sg

## **CFE Engineers Asia Pte. Ltd.**

10 Pioneer Sector 1  
Singapore 628444  
Tel : +65 6861 6006  
Fax : +65 6863 6106  
Email : general@cfe.com.sg

## **Energy Equipment Services Pte. Ltd.**

11 Pandan Road  
Singapore 609259  
Tel : +65 6266 8786  
Fax : +65 6266 8780  
Email : general@eesvc.com.sg

## **Franklin Offshore Americas, Inc.**

P.O. Box 338  
1998 FM 362  
Brookshire, Texas 77423  
U.S.A.  
Tel : +1 (281) 578 3828  
Fax : +1 (281) 578 2938  
Email : general@franklinamericas.com

## **Franklin Offshore Australia Pty. Ltd.**

Perth (Head Office)  
7 Possner Way  
Henderson, WA 6166  
Australia  
Tel : +61 (8) 9410 6000  
Fax : +61 (8) 9410 6001  
Email : sales@franklinoffshore.com.au

## **Darwin**

(Operating Base)  
4 Cochrane Road, Berrimah  
Darwin NT 0828  
Australia  
Tel : +61 (8) 8947 3777  
Fax : +61 (8) 8947 3700  
Email : darwinsales@franklinoffshore.com.au

## **Karratha**

(Operating Base)  
20b Seabrook Crescent  
Karratha, WA 6714  
Australia  
Tel : +61 (8) 9185 3080  
Fax : +61 (8) 9185 3546  
Email : dampiersales@franklinoffshore.com.au

## **Franklin Offshore Caspian Ltd.**

Salyan Highway, 15th Km.  
Baku, AZ - 1023  
Azerbaijan  
Tel : +994 (12) 447 4071  
Fax : +994 (12) 447 4076  
Email : office@franklin.az

## **Franklin Offshore Europe B.V.**

Scheepsbouwweg 45/Harbour 2610 - 2614  
3089 JW Rotterdam  
The Netherlands  
Tel : +31 (0) 10 294 0857  
Fax : +31 (0) 10 495 4085  
Email : info@franklineurope.nl

## **PT. Franklin Offshore Indonesia Perkasa**

(Office/Yard)  
Jl. Mulawarman No. 48 RT. 38  
Kelurahan Manggar  
Kecamatan Balikpapan Timur  
Balikpapan 76116  
Kalimantan Timur, Indonesia  
Tel : +62 542 743668  
Fax : +62 542 743688  
Email : enquiry@franklinindonesia.com

## **Jakarta**

SOHO Podomoro City, Unit 2806  
Jl. Let. Jend. S. Parman Kav. 28.  
Jakarta Barat 11470, Indonesia  
Tel : +62 278 93490  
Fax : +62 278 93492  
Email : enquiry@franklinindonesia.com

## **Franklin Offshore Korea Co., Ltd.**

42, Garisae 2-ro 13beon-gil  
Gangseo-gu  
Busan, Korea 46727  
Tel : +82 (51) 832 0156/7  
Fax : +82 (51) 832 0158  
Email : franklin@franklinkorea.com

## **Franklin Offshore Qatar W.L.L.**

Street No. 45, Gate 44  
Salwa Industrial Area  
PO Box 32297  
Doha, Qatar  
Tel : +974 4450 0338  
Fax : +974 4450 0339  
Email : general@franklinqatar.com