

ISAMIGO 3

CRANE BARGE



PRINCIPAL PARTICULARS

REGISTRY	: SINGAPORE
NOTATION	: BUREAU VERITAS (BV)
GRT / NRT	: 1270 / 381
LENGTH OA	: 48.04m
BEAM MLD	: 22.00m
DEPTH MLD	: 3.80m
OPERATING DRAFT	: 1.20m - 1.70m

CRANE DESCRIPTION

CRANE MODEL	: SKK 20011 GDT-N
CRANE TYPE	: REVOLVING CRANE
MAKER	: SKK, JAPAN
MAIN BOOM LENGTH	: 34.00m
JIB EXTENSION	: 3.00m

MAIN HOIST

CAPACITY	: 200 Tonne (34.00m BOOM) : 206 Tonne (22.00m BOOM)
WORKING RADIUS	: 33.60m / 11.60m (34.00m BOOM)

AUXILIARY HOIST

CAPACITY	: 31 Tonne
WORKING RADIUS	: 31.60m / 11.60m

DECK DESCRIPTION

DECK SPACE	: 22.00m x 23.00m
DECK CAPACITY	: 800 Tonne
DECK STRENGTH	: 10 Tonne / m ²

GENERATORS

	: 3 X 150 KVA, 220 / 110 V, 50 / 60 Hz
	: 1 x 45 KVA, 220 / 110v, 50 / 60 Hz

COMMUNICATIONS

	: MARINE VHF WALKIE TALKIES
--	-----------------------------

TANK CAPACITIES

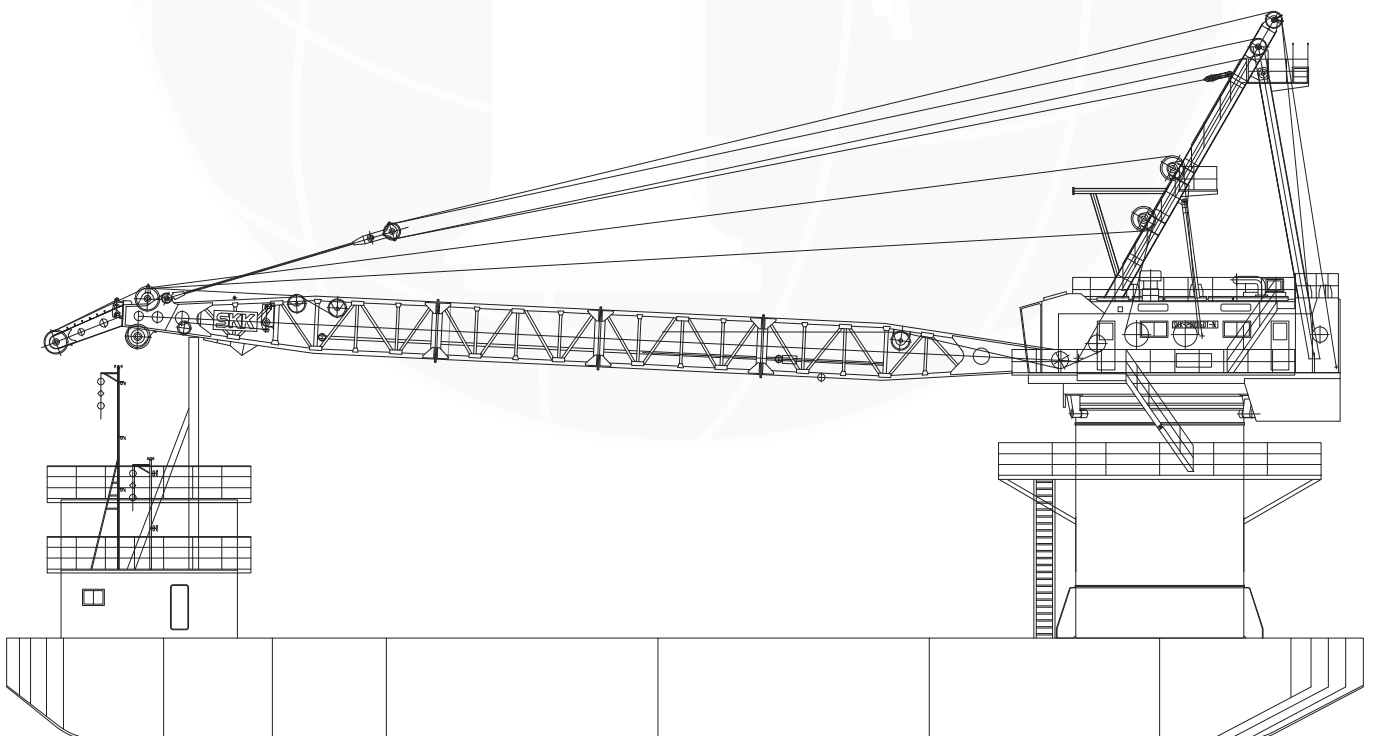
WATER BALLAST	: 269.0m ³ (C), 133.4m ³ (P), 133.4m ³ (S)
FRESH WATER	: 71.3m ³ (P), 71.3m ³ (S)
FUEL TANK	: 74.8m ³

ACCOMMODATION

	: 3 x 4 MEN CABINS
--	--------------------

MOORING (4 TO 8 POINT)

ANCHOR	: 3 Tonne Anchor
ANCHOR WIRE	: 32mm Diameter x 600m
MOORING CHAIN	: 40mm Diameter x 500m (4 Lengths)



ISAMIGO 3

CRANE BARGE



LOAD CAPACITY

BOOM ANGLE	(°)	30°	35°	40°	45°	50°	55°	60°	65°	70°	71°	75°	80°
MAIN BLOCK SWL	(Tonne)	67.1	74.3	82.5	92.1	103.7	117.8	136.6	160.7	194.5		200.0	
MAIN BLOCK PL [1.1x]	(Tonne)	73.8	81.8	90.8	101.3	114.1	129.6	150.3	176.8	214.0		220.0	
MAIN BLOCK RADIUS FROM CENTRE	(m)	33.5	32.0	30.2	28.3	26.1	23.8	21.3	18.7	16.0	15.7	13.2	10.3
AUXILIARY BLOCK SWL	(Tonne)	31.0											
AUXILIARY BLOCK RADIUS FROM CENTRE	(m)	36.6	35.0	33.1	31.0	28.7	26.2	23.5	20.7	17.7	15.3	14.7	11.6

